

BLACK FITTING AIR TEST GAUGES

Submittal Information

Part No 12701-12712
 Document No. SPEC12701
 Date 2020-02-18
 Revision 02

General Properties

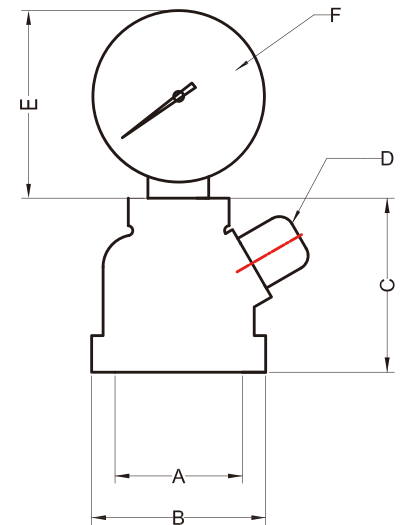
Material: Gauge: Steel, Brass
 Body: Steel
 Color: Black
 Dial size: 2"
 Window : Clear plastic
 Dial plate : Aluminum, with pointer stop
 Pointer : Aluminum, black
 Connection : Brass
 Accuracy : +/-1%
 Pressure range : 0-15psi, 0-30psi, 0-60psi, 0-100psi

Specification

Part NO.	A Pipe size	B	C	D Connector	E	F	Specifications	U/M	Std.Pkg.
12701	1/2" NPT	1.2"	1.4"	1/16" NPT	2.4"	2"	15 PSI	EA	50
12702	3/4" NPT	1.5"	1.5"	1/16" NPT	2.4"	2"	15 PSI	EA	50
12703	1" NPT	1.8"	1.7"	1/16" NPT	2.4"	2"	15 PSI	EA	50
12704	1/2" NPT	1.2"	1.4"	1/16" NPT	2.4"	2"	60 PSI	EA	50
12705	3/4" NPT	1.5"	1.5"	1/16" NPT	2.4"	2"	60 PSI	EA	50
12706	1" NPT	1.8"	1.7"	1/16" NPT	2.4"	2"	60 PSI	EA	50
12707	1/2" NPT	1.2"	1.4"	1/16" NPT	2.4"	2"	30 PSI	EA	50
12708	3/4" NPT	1.5"	1.5"	1/16" NPT	2.4"	2"	30 PSI	EA	50
12709	1" NPT	1.8"	1.7"	1/16" NPT	2.4"	2"	30 PSI	EA	50
12710	1/2" NPT	1.2"	1.4"	1/16" NPT	2.4"	2"	100 PSI	EA	50
12711	3/4" NPT	1.5"	1.5"	1/16" NPT	2.4"	2"	100 PSI	EA	50
12712	1" NPT	1.8"	1.7"	1/16" NPT	2.4"	2"	100 PSI	EA	50

Features

- Easy-to-read gauge with clear facing
- Durable construction for performance reliability
- Black iron threaded bell for leak tight connection
- All gauges are 2-inch diameter face
- Test air pressure
- Easy to install, no tools are required



Product Structure